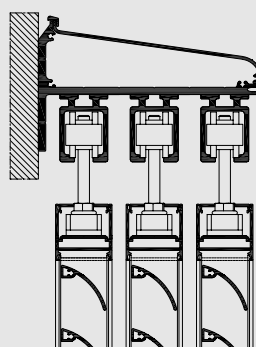
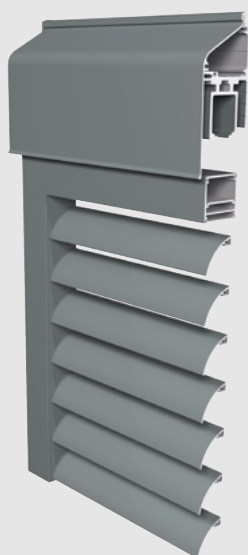




# BS 40

Easy manipulation

**R**  
REYNAERS  
aluminium



The BS 40 sunscreening system offers an innovative and aesthetically pleasing shading solution for energy conservation, perfectly suitable in apartments and smaller buildings. The system exists of vents with z-shaped or curved louvres. The panels can be manipulated manually and motorised for opening and closing purposes. They offer different sliding options ranging from one to three panels behind each other, therefore making it an ideal application to manipulate the available minimum light and controlling the temperature and comfort level in buildings. The system comes with various mounting options, providing use in front of facades, between floors or in any combination thereof, making it an extremely versatile application.

## TECHNICAL CHARACTERISTICS

	BS40
Shape louvres	Z-shaped or curved / wood (optional)
Louvre depth / height	40 mm
Max. vent height	3000 mm (depending on the width)
Max. vent width	2000 mm (depending on the height)
Max. vent weight	100 kg
Sliding option	mono-, 2- & 3-rail
Operation	manual & motorised

## BS 40

Z-shaped louvres



curved louvres



REYNAERS ALUMINIUM NV/SA • [www.reynaers.com](http://www.reynaers.com) • [info@reynaers.com](mailto:info@reynaers.com)

01/2011 - 0H0.91C2.00 - Publisher Responsible at Law: L. Verfaillie, Oude Liersebaan 266, B-2570 Duffel

